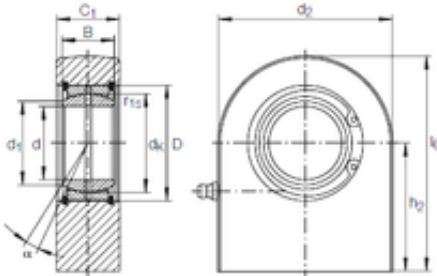




NTN Bearing Driveshaft USA CORP.

50 mm x 75 mm x 35 mm INA GF 50 DO Plain bearings



Bearing No. GF 50 DO

Size	50x75x35 mm
Bore Diameter	50 mm
Outer Diameter	75 mm
Width	35 mm
d	50 mm
D	75 mm
B	35 mm
d1	55,9 mm
d2	123 mm
dk	66 mm
h2	88 mm
l6 max.	149,5 mm
r1 min.	0,6 mm
C1	40 mm
C1 max	41,5 mm
Angle	6 °
Weight	4,4 Kg
Basic dynamic load rating (C)	156 kN

GF 50 DO Bearing 2D drawings and 3D CAD models