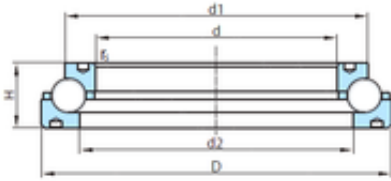




# NTN Bearing Driveshaft USA CORP.

## PSL PSL 212-301 Angular contact ball bearings



Bearing No. PSL 212-301

Size	785.685x952.5x95.631 mm
Bore Diameter	785,685 mm
Outer Diameter	952,5 mm
Width	95,631 mm
d	785,685 mm
D	952,5 mm
H	95,631 mm
d1	882,65 mm
d2	857,25 mm
r	6,4 mm
Weight	94 Kg
Basic dynamic load rating (C)	612 kN

PSL 212-301 Bearing 2D drawings and 3D CAD models